



**POP**  
SOLUTIONS

WE  
THINK,  
DESIGN,  
PRODUCE  
FOR YOU

**RECTO VERSO**

## DESCRIPTION

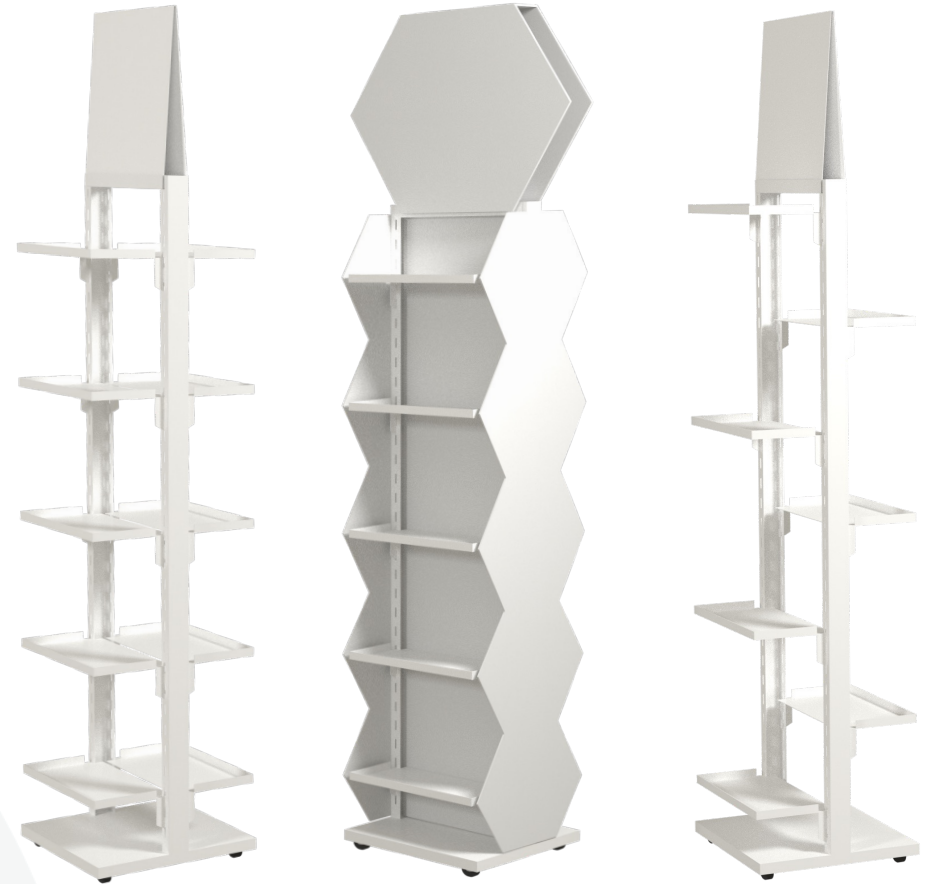
RECTO VERSO is a multi-purpose metal display for small and medium-sized retail stores offering the possibility of displaying products on various combinations of shelves.

They can be moved and adjusted, provide variable presentation according to your needs.



# TECHNICAL INFORMATION

<b>Structure:</b>	metal
<b>Base:</b>	380 x 380 mm
<b>Height:</b>	1325 mm. + header
<b>Shelves:</b>	4 to 8. Adjustable positions
<b>Hooks:</b>	on cross bars. Adjustable positions
<b>Colours:</b>	choice of more than 50 different colours
<b>Header:</b>	printed on both sides, interchangeable
<b>Cladding:</b>	Side panels and header can be changed. Printable from bioplastics to cardboard



## AND MORE

- Sustainable, made of 100% recyclable metal, its lifespan is unlimited.
- Resistant, RECTO-VERSO is solid enough to take light to medium loads.
- Its 2 faces offer maximum visibility for your products and brands.
- Lightweight and on rollers, it takes up little space and is easy to move around your point of sales.
- The infinite customisation of its design is budget friendly (ROI after 3 promotions) and allows an easy change of communication.



# SIMULATIONS



Side dressing in  
Dispa  
Side-by-side shelves



Hooks  
Cladding in forex



Staggered  
shelves

Recto Verso can be produced in various colours, and offers multiple customization possibilities, in order to match perfectly with the visual identity you're looking for.

## READY TO CHALLENGE OUR TEAM?

Contact me to discuss your project or  
request a free quote by e-mail:

[info@pop-solutions.be](mailto:info@pop-solutions.be)

Tél.: +32 (0)2 880 68 50



THANK YOU  
[www.popsolutions.be](http://www.popsolutions.be)

**POP**  
**SOLUTIONS** WE  
THINK,  
DESIGN,  
PRODUCE  
FOR YOU